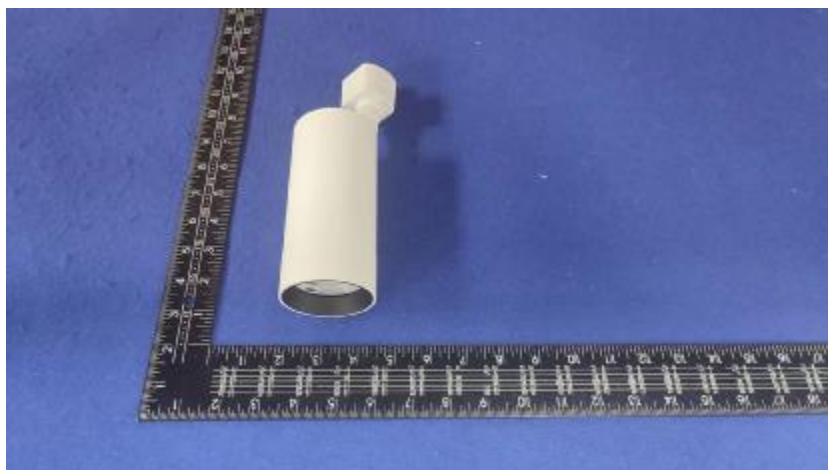


### Luminaire Photograph



Light Output Ratio:	87.4%	
Luminaire Power:	20.72 W	
SHR Nominal:	0.50	Calculated using the TM5
SHR Maximum:	0.60	fine grid method.

C Range: 0 - 360DEG  
C Interval: 30.0DEG  
Test Speed: HIGH  
Temperature: 25.3DEG  
Operators: Zoe  
Test Date: 2022-12-12

$\gamma$  Range: 0 - 180DEG  
 $\gamma$  Interval: 1.0DEG  
Test System: EVERFINE GO-SPEX500\_V1 SYSTEM V2.00.416  
Humidity: 65.0%  
Test Distance: 3.160m [K=1.0000]  
Remarks: LAMP: BXRE-30G1000-A-83 Ra: 90  
LENS: TH-YL5023H-36D 36R  
DRIVER: RISE 120V 500mA  
30minutes warm-up

## LUMINOUS INTENSITY DISTRIBUTION DIAGRAM

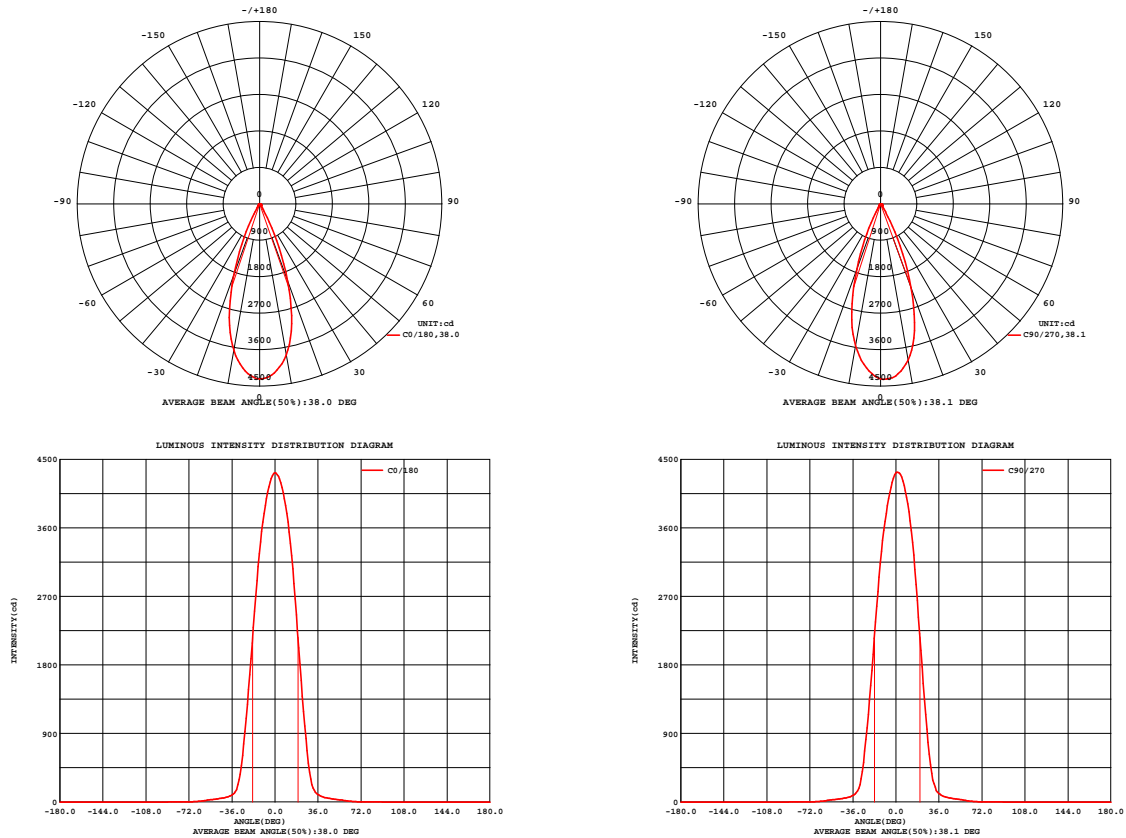


Fig. C0/C180

Fig. C90/C270

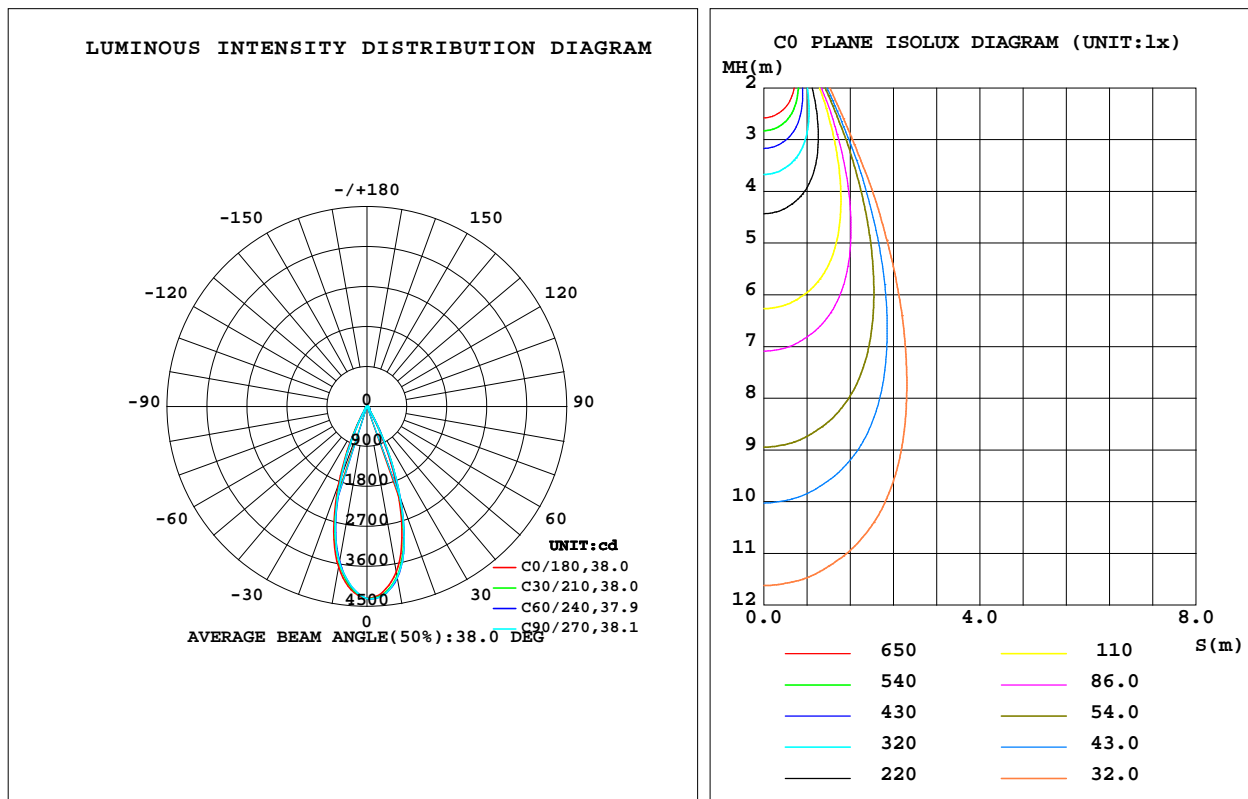
C Range: 0 - 360DEG  
C Interval: 30.0DEG  
Test Speed: HIGH  
Temperature: 25.3DEG  
Operators: Zoe  
Test Date: 2022-12-12

$\gamma$  Range: 0 - 180DEG  
 $\gamma$  Interval: 1.0DEG  
Test System: EVERFINE GO-SPEX500\_V1 SYSTEM V2.00.416  
Humidity: 65.0%  
Test Distance: 3.160m [K=1.0000]  
Remarks: LAMP: BXRE-30G1000-A-83 Ra: 90  
LENS: TH-YL5023H-36D 36R  
DRIVER: RISE 120V 500mA  
30minutes warm-up

## LUMINAIRE PHOTOMETRIC TEST REPORT

Test:U:119.95V I:0.1742A P:20.719W PF:0.9900 Freq:59.98Hz Lamp Flux:2052.9x1 lm		
NAME: 2319.200-H3AM-500	TYPE:	WEIGHT:
SPEC.:3000K	DIM.:	SERIAL No.:2212121317
MFR.: RISE	SUR.:0.002826m2	Shielding Angle:

DATA OF LAMP		PHOTOMETRIC DATA Eff: 86.62 lm/W			
MODEL	Bridgelux	I <sub>max</sub> (cd)	4330	S/MH(C0/180)	0.59
NOMINAL POWER(W)	20	LOR(%)	87.4	S/MH(C90/270)	0.57
RATED VOLTAGE(V)	120	TOTAL FLUX(lm)	1794.7	η UP,DN(C0-180)	0.0,46.1
NOMINAL FLUX(lm)	2052.9	CIE CLASS	DIRECT	η UP,DN(C180-360)	0.0,41.3
LAMPS INSIDE	1	η up(%)	0.0	CIBSE SHR NOM	0.50
TEST VOLTAGE(V)	120	η down(%)	87.4	CIBSE SHR MAX	0.60



C Range: 0 - 360DEG  
C Interval: 30.0DEG  
Test Speed: HIGH  
Temperature:25.3DEG  
Operators:Zoe  
Test Date:2022-12-12

γ Range: 0 - 180DEG  
γ Interval: 1.0DEG  
Test System:EVERFINE GO-SPEX500\_V1 SYSTEM V2.00.416  
Humidity:65.0%  
Test Distance:3.160m [K=1.0000]  
Remarks: LAMP:BXRE-30G1000-A-83 Ra:90  
LENS: TH-YL5023H-36D 36R  
DRIVER: RISE 120V 500mA  
30minutes warm-up

## ZONAL FLUX DIAGRAM

### ZONAL FLUX DIAGRAM:

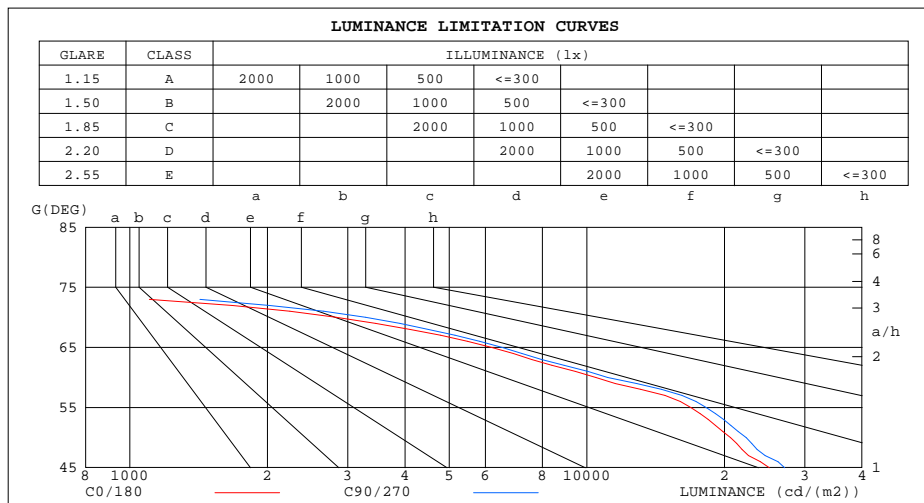
γ	C0	C45	C90	C135	C180	C225	C270	C315	γ	Φ zone	Φ total	%lum,lamp
10	3789	3906	3913	3794	3675	3573	3566	3705	0- 10	384.1	384.1	21.4,18.7
20	2023	2182	2207	2009	1879	1731	1726	1937	10- 20	807.8	1192	66.4,58.1
30	299.2	365.9	377.2	300.6	296.8	247.4	230.1	300.0	20- 30	450.8	1643	91.5,80
40	67.99	73.57	75.41	70.14	64.94	60.94	60.94	64.83	30- 40	81.03	1724	96,84
50	37.49	39.16	40.54	38.82	37.33	35.28	35.41	36.88	40- 50	38.70	1762	98.2,85.9
60	14.79	15.27	15.69	14.95	14.86	13.90	13.79	14.82	50- 60	23.95	1786	99.5,87
70	2.734	2.920	3.175	2.642	2.752	2.339	2.374	2.612	60- 70	7.588	1794	100,87.4
80	0.0739	0.0625	0.0630	0.0516	0.0658	0.0450	0.0497	0.0365	70- 80	0.6648	1795	100,87.4
90	0	0	0	0	0	0	0	0	80- 90	0.0464	1795	100,87.4
100	0	0	0	0	0	0	0	0	90-100	0	1795	100,87.4
110	0	0	0	0	0	0	0	0	100-110	0	1795	100,87.4
120	0	0	0	0	0	0	0	0	110-120	0	1795	100,87.4
130	0	0	0	0	0	0	0	0	120-130	0	1795	100,87.4
140	0	0	0	0	0	0	0	0	130-140	0	1795	100,87.4
150	0	0	0	0	0	0	0	0	140-150	0	1795	100,87.4
160	0	0	0	0	0	0	0	0	150-160	0	1795	100,87.4
170	0	0	0	0	0	0	0	0	160-170	0	1795	100,87.4
180	0	0	0	0	0	0	0	0	170-180	0	1795	100,87.4
DEG	LUMINOUS INTENSITY:cd									UNIT:lm		

C Range: 0 - 360DEG  
C Interval: 30.0DEG  
Test Speed: HIGH  
Temperature:25.3DEG  
Operators:Zoe  
Test Date:2022-12-12

γ Range: 0 - 180DEG  
γ Interval: 1.0DEG  
Test System:EVERFINE GO-SPEX500\_V1 SYSTEM V2.00.416  
Humidity:65.0%  
Test Distance:3.160m [K=1.0000]  
Remarks: LAMP:BXRE-30G1000-A-83 Ra:90  
LENS: TH-YL5023H-36D 36R  
DRIVER: RISE 120V 500mA  
30minutes warm-up

### LUMINANCE LIMITATION CURVES

Test:U:119.95V I:0.1742A P:20.719W PF:0.9900 Freq:59.98Hz Lamp Flux:2052.9x1 lm		
NAME: 2319.200-H3AM-500	TYPE:	WEIGHT:
SPEC.:3000K	DIM.:	SERIAL No.:2212121317
MFR.: RISE	SUR.:0.002826m2	Shielding Angle:



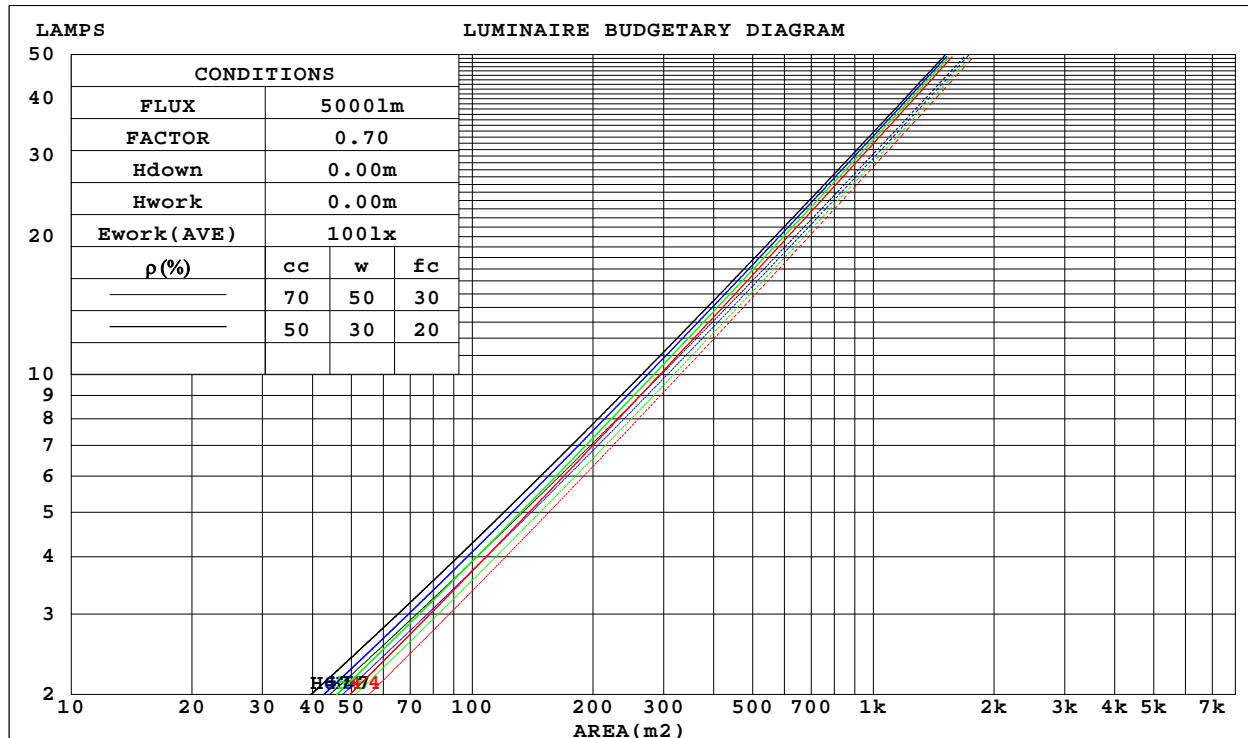
C Range: 0 - 360DEG  
C Interval: 30.0DEG  
Test Speed: HIGH  
Temperature:25.3DEG  
Operators:Zoe  
Test Date:2022-12-12

γ Range: 0 - 180DEG  
γ Interval: 1.0DEG  
Test System:EVERFINE GO-SPEX500\_V1 SYSTEM V2.00.416  
Humidity:65.0%  
Test Distance:3.160m [K=1.0000]  
Remarks: LAMP:BXRE-30G1000-A-83 Ra:90  
LENS: TH-YL5023H-36D 36R  
DRIVER: RISE 120V 500mA  
30minutes warm-up

## CU AND LUMINAIRE BUDGETARY ESTIMATE DIAGRAM

Test:U:119.95V I:0.1742A P:20.719W PF:0.9900 Freq:59.98Hz Lamp Flux:2052.9x1 lm		
NAME: 2319.200-H3AM-500	TYPE:	WEIGHT:
SPEC.:3000K	DIM.:	SERIAL No.:2212121317
MFR.: RISE	SUR.:0.002826m2	Shielding Angle:

$\rho_{cc}$	80%			70%			50%			30%			10%			0
$\rho_w$	50%	30%	10%	50%	30%	10%	50%	30%	10%	50%	30%	10%	50%	30%	10%	0
$\rho_{fc}$	20%			20%			20%			20%			20%			0
RCR	RCR:Room Cavity Ratio			Coefficients of Utilization(CU)												
0.0	1.04	1.04	1.04	1.02	1.02	1.02	.97	.97	.97	.93	.93	.93	.89	.89	.89	.87
1.0	.98	.96	.94	.96	.94	.93	.93	.91	.90	.89	.88	.87	.86	.86	.85	.83
2.0	.93	.90	.87	.91	.88	.86	.88	.86	.84	.86	.84	.83	.83	.82	.81	.79
3.0	.88	.84	.81	.87	.83	.81	.84	.82	.79	.82	.80	.78	.80	.79	.77	.76
4.0	.84	.80	.77	.83	.79	.76	.81	.78	.75	.79	.77	.74	.78	.75	.74	.72
5.0	.80	.76	.72	.79	.75	.72	.77	.74	.72	.76	.73	.71	.75	.72	.70	.69
6.0	.76	.72	.69	.76	.72	.69	.74	.71	.68	.73	.70	.68	.72	.69	.67	.66
7.0	.73	.69	.66	.72	.68	.66	.71	.68	.65	.71	.67	.65	.70	.67	.65	.64
8.0	.70	.66	.63	.70	.66	.63	.69	.65	.63	.68	.65	.62	.67	.64	.62	.61
9.0	.67	.63	.60	.67	.63	.60	.66	.63	.60	.66	.62	.60	.65	.62	.60	.59
10.0	.65	.61	.58	.65	.61	.58	.64	.60	.58	.63	.60	.58	.63	.60	.58	.57



C Range: 0 - 360DEG  
C Interval: 30.0DEG  
Test Speed: HIGH  
Temperature:25.3DEG  
Operators:Zoe  
Test Date:2022-12-12

$\gamma$  Range: 0 - 180DEG  
 $\gamma$  Interval: 1.0DEG  
Test System:EVERFINE GO-SPEX500\_V1 SYSTEM V2.00.416  
Humidity:65.0%  
Test Distance:3.160m [K=1.0000]  
Remarks: LAMP:BXRE-30G1000-A-83 Ra:90  
LENS: TH-YL5023H-36D 36R  
DRIVER: RISE 120V 500mA  
30minutes warm-up

### WEC AND CCEC

Test:U:119.95V I:0.1742A P:20.719W PF:0.9900 Freq:59.98Hz Lamp Flux:2052.9x1 lm		
NAME: 2319.200-H3AM-500	TYPE:	WEIGHT:
SPEC.:3000K	DIM.:	SERIAL No.:2212121317
MFR.: RISE	SUR.:0.002826m2	Shielding Angle:

$\rho_{cc}$	80%			70%			50%			30%			10%			0
$\rho_w$	50%	30%	10%	50%	30%	10%	50%	30%	10%	50%	30%	10%	50%	30%	10%	0
$\rho_{fc}$	20%			20%			20%			20%			20%			0
RCR	RCR:Room Cavity Ratio Wall Exitance Coefficients(WEC)															
0.0																
1.0	.133	.076	.024	.128	.073	.023	.117	.067	.021	.107	.062	.020	.097	.056	.018	
2.0	.125	.069	.021	.121	.066	.020	.112	.062	.019	.103	.058	.018	.095	.054	.017	
3.0	.118	.063	.019	.114	.061	.018	.106	.058	.018	.099	.054	.017	.093	.051	.016	
4.0	.111	.058	.017	.108	.057	.017	.102	.054	.016	.096	.051	.015	.090	.049	.015	
5.0	.106	.054	.016	.103	.053	.015	.097	.051	.015	.092	.048	.014	.087	.046	.014	
6.0	.100	.050	.014	.098	.049	.014	.093	.048	.014	.088	.046	.014	.084	.044	.013	
7.0	.096	.047	.013	.093	.047	.013	.089	.045	.013	.085	.044	.013	.081	.042	.012	
8.0	.091	.045	.013	.089	.044	.012	.086	.043	.012	.082	.042	.012	.079	.040	.012	
9.0	.088	.042	.012	.086	.042	.012	.083	.041	.012	.079	.040	.011	.076	.039	.011	
10.0	.084	.040	.011	.083	.040	.011	.080	.039	.011	.077	.038	.011	.074	.037	.011	

$\rho_{cc}$	80%			70%			50%			30%			10%			0
$\rho_w$	50%	30%	10%	50%	30%	10%	50%	30%	10%	50%	30%	10%	50%	30%	10%	0
$\rho_{fc}$	20%			20%			20%			20%			20%			0
RCR	RCR:Room Cavity Ratio Ceiling Cavity Exitance Coefficients(CCEC)															
0.0	.167	.167	.167	.142	.142	.142	.097	.097	.097	.056	.056	.056	.018	.018	.018	
1.0	.148	.138	.128	.127	.118	.110	.087	.081	.076	.050	.047	.044	.016	.015	.014	
2.0	.133	.116	.101	.114	.100	.088	.078	.069	.061	.045	.040	.036	.014	.013	.012	
3.0	.121	.099	.082	.104	.086	.071	.071	.059	.050	.041	.035	.029	.013	.011	.010	
4.0	.111	.086	.067	.095	.074	.058	.065	.052	.041	.038	.030	.024	.012	.010	.008	
5.0	.102	.075	.055	.088	.065	.048	.061	.046	.034	.035	.027	.020	.011	.009	.007	
6.0	.095	.067	.047	.082	.058	.041	.056	.041	.029	.033	.024	.017	.011	.008	.006	
7.0	.089	.060	.040	.076	.052	.035	.053	.036	.025	.031	.021	.015	.010	.007	.005	
8.0	.084	.054	.034	.072	.047	.030	.050	.033	.021	.029	.019	.013	.009	.006	.004	
9.0	.079	.049	.030	.068	.043	.026	.047	.030	.018	.027	.018	.011	.009	.006	.004	
10.0	.075	.045	.026	.064	.039	.023	.045	.028	.016	.026	.016	.010	.008	.005	.003	

C Range: 0 - 360DEG  
 C Interval: 30.0DEG  
 Test Speed: HIGH  
 Temperature:25.3DEG  
 Operators:Zoe  
 Test Date:2022-12-12

$\gamma$  Range: 0 - 180DEG  
 $\gamma$  Interval: 1.0DEG  
 Test System:EVERFINE GO-SPEX500\_V1 SYSTEM V2.00.416  
 Humidity:65.0%  
 Test Distance:3.160m [K=1.0000]  
 Remarks: LAMP:BXRE-30G1000-A-83 Ra:90  
 LENS: TH-YL5023H-36D 36R  
 DRIVER: RISE 120V 500mA  
 30minutes warm-up

## UGR(Unified Glare Rating) Table

Test:U:119.95V I:0.1742A P:20.719W PF:0.9900 Freq:59.98Hz Lamp Flux:2052.9x1 lm										
NAME: 2319.200-H3AM-500					TYPE:			WEIGHT:		
SPEC.:3000K					DIM.:			SERIAL No.:2212121317		
MFR.: RISE					SUR.:0.002826m2			Shielding Angle:		
ceiling/cavity	0.7	0.7	0.5	0.5	0.3	0.7	0.7	0.5	0.5	0.3
walls	0.5	0.3	0.5	0.3	0.3	0.5	0.3	0.5	0.3	0.3
working plane	0.2	0.2	0.2	0.2	0.2	0.2	0.2	0.2	0.2	0.2
Room dimensions	Viewed crosswise					Viewed endwise				
x = 2H y = 2H	15.4	16.1	15.6	16.3	16.5	15.7	16.5	16.0	16.7	16.8
3H	15.4	16.1	15.6	16.2	16.4	15.7	16.4	16.0	16.6	16.8
4H	15.3	15.9	15.5	16.2	16.4	15.6	16.3	15.9	16.5	16.7
6H	15.2	15.8	15.5	16.0	16.3	15.6	16.2	15.8	16.4	16.7
8H	15.1	15.7	15.4	16.0	16.3	15.5	16.1	15.8	16.4	16.6
12H	15.1	15.7	15.4	15.9	16.2	15.5	16.0	15.8	16.3	16.6
4H 2H	15.4	16.1	15.6	16.3	16.5	15.7	16.4	16.0	16.6	16.8
3H	15.3	15.9	15.7	16.2	16.5	15.7	16.3	16.0	16.5	16.8
4H	15.3	15.8	15.6	16.1	16.4	15.6	16.1	15.9	16.4	16.7
6H	15.2	15.6	15.5	16.0	16.3	15.5	16.0	15.9	16.3	16.6
8H	15.1	15.5	15.5	15.9	16.3	15.4	15.9	15.8	16.2	16.6
12H	15.0	15.4	15.5	15.8	16.2	15.4	15.8	15.8	16.2	16.5
8H 4H	15.1	15.5	15.5	15.9	16.3	15.5	15.9	15.8	16.2	16.6
6H	15.0	15.4	15.4	15.8	16.2	15.3	15.7	15.8	16.1	16.5
8H	14.9	15.3	15.4	15.7	16.1	15.3	15.6	15.7	16.0	16.5
12H	14.9	15.2	15.3	15.6	16.1	15.2	15.5	15.7	15.9	16.4
12H 4H	15.1	15.5	15.5	15.8	16.2	15.4	15.8	15.8	16.2	16.6
6H	14.9	15.3	15.4	15.7	16.1	15.3	15.6	15.7	16.0	16.5
8H	14.9	15.2	15.3	15.6	16.1	15.2	15.5	15.7	15.9	16.4
Variations with the observer position at spacings:										
S = 1.0H	+ 1.3 / - 2.0					+ 1.4 / - 2.0				
1.5H	+ 1.3 / - 0.9					+ 1.7 / - 1.2				
2.0H	+ 2.3 / - 4.2					+ 2.4 / - 4.3				

CIE Pub.117, 2053 lm Total Lamp Luminous Flux Corrected (8log(F/F0) = 2.5)  
Area: 0.002826 m2

C Range: 0 - 360DEG  
C Interval: 30.0DEG  
Test Speed: HIGH  
Temperature:25.3DEG  
Operators:Zoe  
Test Date:2022-12-12

γ Range: 0 - 180DEG  
γ Interval: 1.0DEG  
Test System:EVERFINE GO-SPEX500\_V1 SYSTEM V2.00.416  
Humidity:65.0%  
Test Distance:3.160m [K=1.0000]  
Remarks: LAMP:BXRE-30G1000-A-83 Ra:90  
LENS: TH-YL5023H-36D 36R  
DRIVER: RISE 120V 500mA  
30minutes warm-up



### UTILIZATION FACTORS TABLE

Test:U:119.95V I:0.1742A P:20.719W PF:0.9900 Freq:59.98Hz Lamp Flux:2052.9x1 lm		
NAME: 2319.200-H3AM-500	TYPE:	WEIGHT:
SPEC.:3000K	DIM.:	SERIAL No.:2212121317
MFR.: RISE	SUR.:0.002826m2	Shielding Angle:

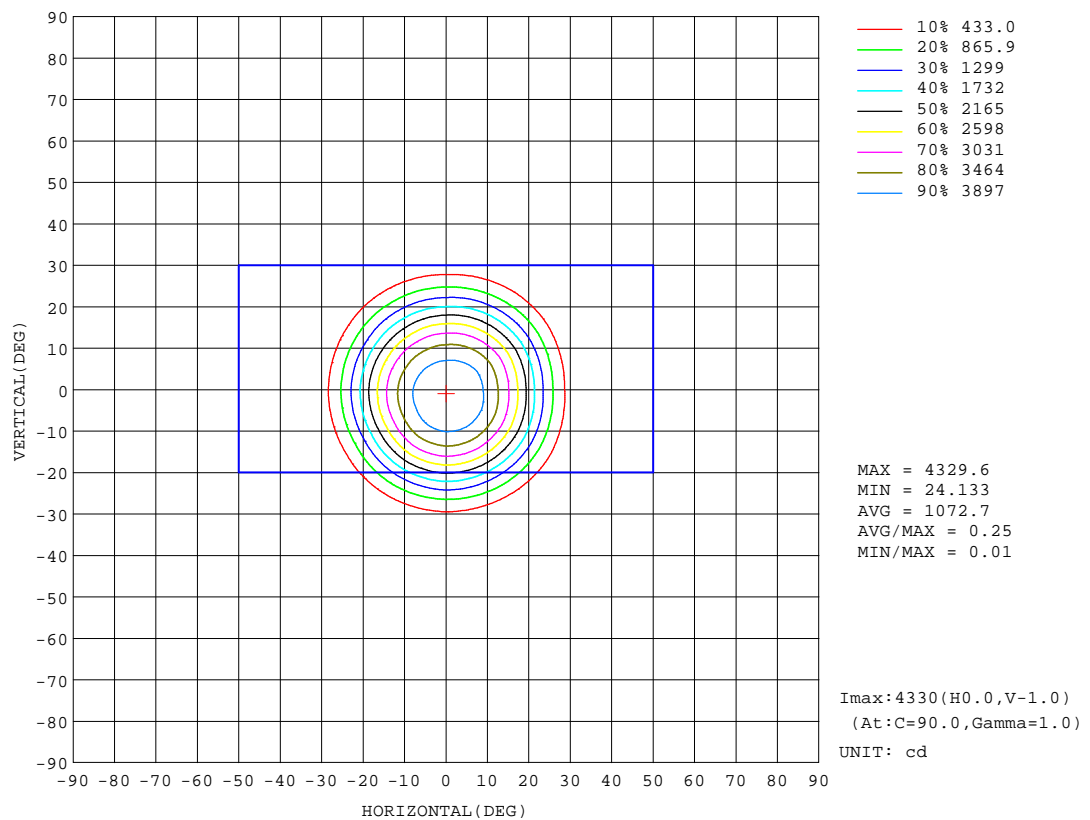
REFLECTANCE										
Ceiling	0.8	0.8	0.8	0.7	0.7	0.7	0.5	0.5	0.5	0
Walls	0.7	0.5	0.3	0.7	0.5	0.3	0.7	0.5	0.3	0
Working plane	0.2	0.2	0.2	0.2	0.2	0.2	0.2	0.2	0.2	0
ROOM INDEX	UTILIZATION FACTORS(PERCENT) $k(RI) \times RCR = 5$									
k = 0.60	78	73	69	77	72	69	77	72	69	66
0.80	84	79	76	84	79	76	83	79	76	73
1.00	88	83	80	87	83	80	86	83	79	76
1.25	91	87	84	90	86	84	89	85	83	79
1.50	93	89	87	92	89	86	90	87	85	82
2.00	95	92	89	94	91	89	92	89	87	83
2.50	97	94	91	95	93	90	93	91	89	84
3.00	98	95	93	97	94	92	94	92	90	85
4.00	100	98	96	98	96	94	95	93	92	86
5.00	101	99	98	99	97	96	96	94	93	87
ROOM INDEX	UF(total)									Direct
According to DIN EN 13032-2 2004			Suspended					SHRNOM = 1.25		

C Range: 0 - 360DEG  
C Interval: 30.0DEG  
Test Speed: HIGH  
Temperature:25.3DEG  
Operators:Zoe  
Test Date:2022-12-12

$\gamma$  Range: 0 - 180DEG  
 $\gamma$  Interval: 1.0DEG  
Test System:EVERFINE GO-SPEX500\_V1 SYSTEM V2.00.416  
Humidity:65.0%  
Test Distance:3.160m [K=1.0000]  
Remarks: LAMP:BXRE-30G1000-A-83 Ra:90  
LENS: TH-YL5023H-36D 36R  
DRIVER: RISE 120V 500mA  
30minutes warm-up

## ISOCANDELA DIAGRAM

Test:U:119.95V I:0.1742A P:20.719W PF:0.9900 Freq:59.98Hz Lamp Flux:2052.9x1 lm		
NAME: 2319.200-H3AM-500	TYPE:	WEIGHT:
SPEC.:3000K	DIM.:	SERIAL No.:2212121317
MFR.: RISE	SUR.:0.002826m2	Shielding Angle:



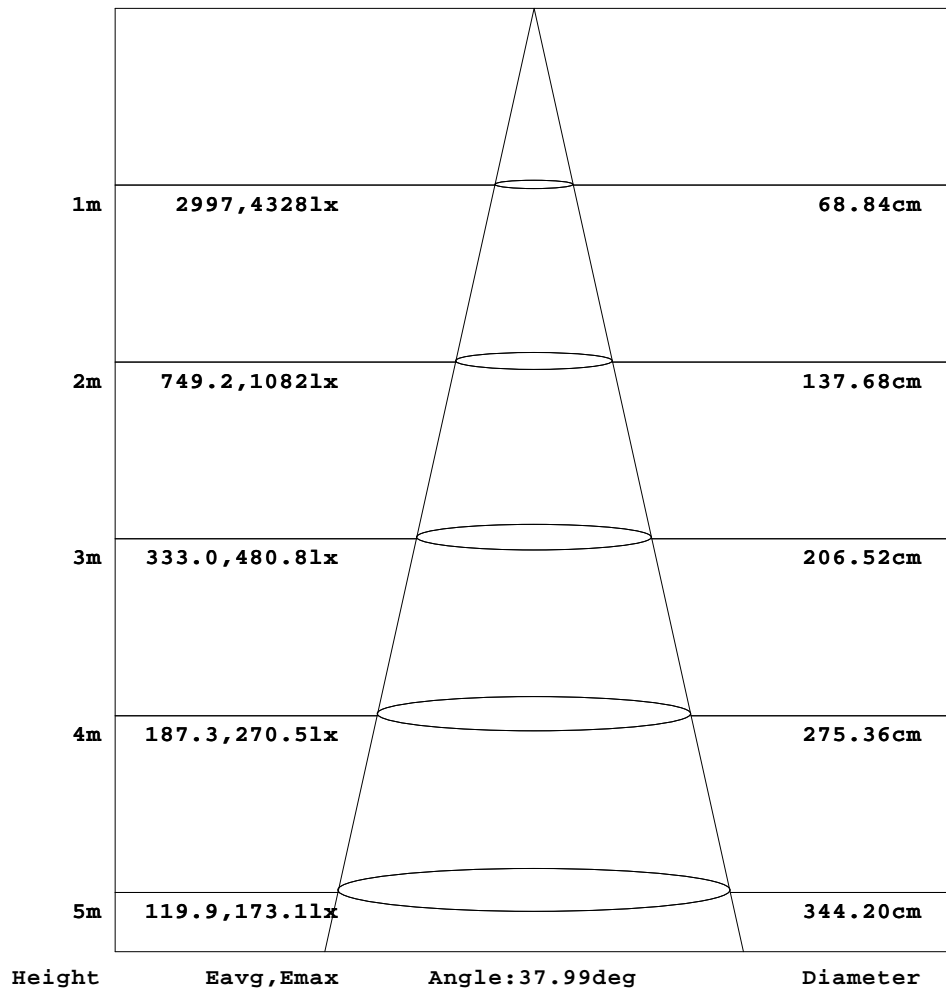
C Range: 0 - 360DEG  
C Interval: 30.0DEG  
Test Speed: HIGH  
Temperature:25.3DEG  
Operators:Zoe  
Test Date:2022-12-12

$\gamma$  Range: 0 - 180DEG  
 $\gamma$  Interval: 1.0DEG  
Test System:EVERFINE GO-SPEX500\_V1 SYSTEM V2.00.416  
Humidity:65.0%  
Test Distance:3.160m [K=1.0000]  
Remarks: LAMP:BXRE-30G1000-A-83 Ra:90  
LENS: TH-YL5023H-36D 36R  
DRIVER: RISE 120V 500mA  
30minutes warm-up

### AAI Figure

Test:U:119.95V I:0.1742A P:20.719W PF:0.9900 Freq:59.98Hz Lamp Flux:2052.9x1 lm		
NAME: 2319.200-H3AM-500	TYPE:	WEIGHT:
SPEC.:3000K	DIM.:	SERIAL No.:2212121317
MFR.: RISE	SUR.:0.002826m2	Shielding Angle:

Flux out:1116 lm



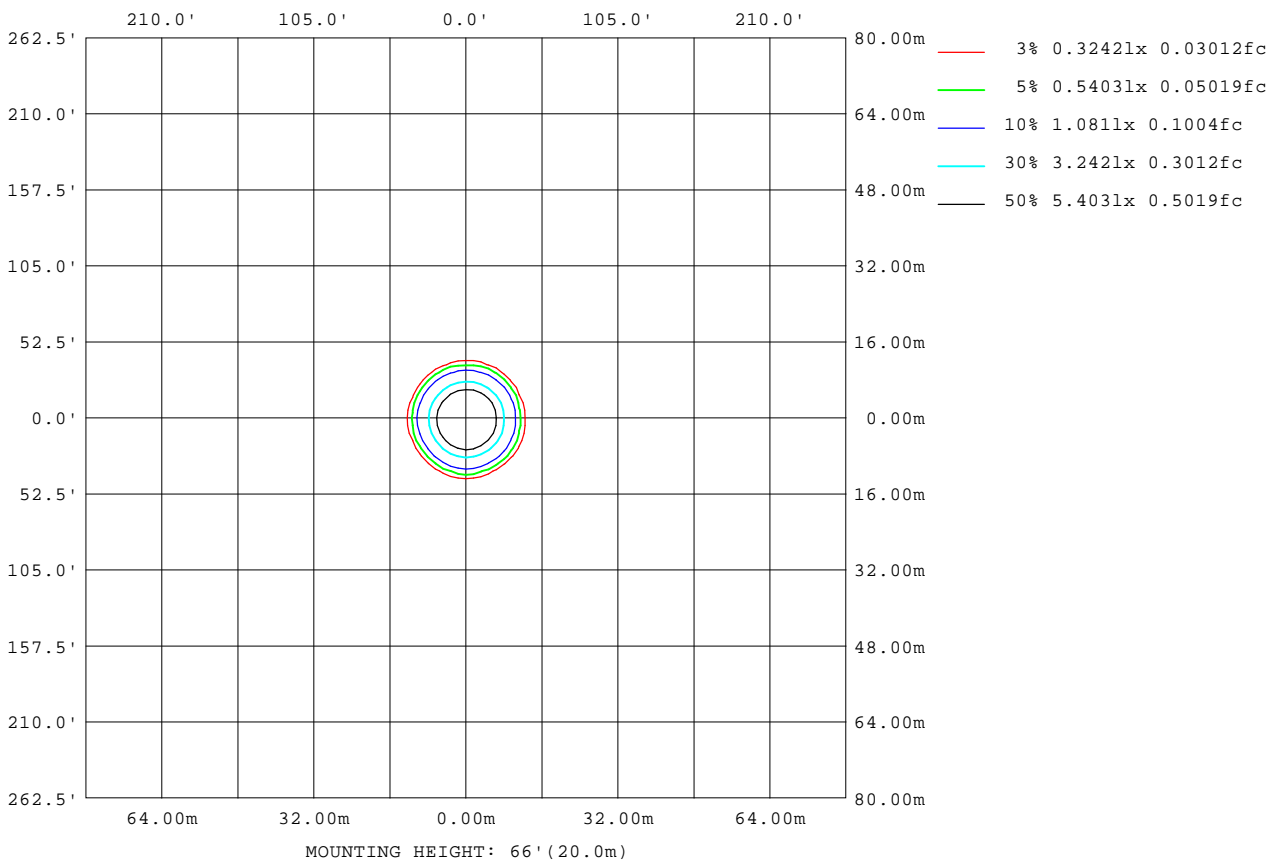
Note:The Curves indicate the illuminated area and the average illumination when the luminaire is at different distance.

C Range: 0 - 360DEG  
C Interval: 30.0DEG  
Test Speed: HIGH  
Temperature:25.3DEG  
Operators:Zoe  
Test Date:2022-12-12

γ Range: 0 - 180DEG  
γ Interval: 1.0DEG  
Test System:EVERFINE GO-SPEX500\_V1 SYSTEM V2.00.416  
Humidity:65.0%  
Test Distance:3.160m [K=1.0000]  
Remarks: LAMP:BXRE-30G1000-A-83 Ra:90  
LENS: TH-YL5023H-36D 36R  
DRIVER: RISE 120V 500mA  
30minutes warm-up

## ISOLUX DIAGRAM

Test:U:119.95V I:0.1742A P:20.719W PF:0.9900 Freq:59.98Hz Lamp Flux:2052.9x1 lm		
NAME: 2319.200-H3AM-500	TYPE:	WEIGHT:
SPEC.:3000K	DIM.:	SERIAL No.:2212121317
MFR.: RISE	SUR.:0.002826m2	Shielding Angle:



C Range: 0 - 360DEG  
C Interval: 30.0DEG  
Test Speed: HIGH  
Temperature:25.3DEG  
Operators:Zoe  
Test Date:2022-12-12

γ Range: 0 - 180DEG  
γ Interval: 1.0DEG  
Test System:EVERFINE GO-SPEX500\_V1 SYSTEM V2.00.416  
Humidity:65.0%  
Test Distance:3.160m [K=1.0000]  
Remarks: LAMP:BXRE-30G1000-A-83 Ra:90  
LENS: TH-YL5023H-36D 36R  
DRIVER: RISE 120V 500mA  
30minutes warm-up

### LED Avg.L Report

Test:U:119.95V I:0.1742A P:20.719W PF:0.9900 Freq:59.98Hz Lamp Flux:2052.9x1 lm		
NAME: 2319.200-H3AM-500	TYPE:	WEIGHT:
SPEC.:3000K	DIM.:	SERIAL No.:2212121317
MFR.: RISE	SUR.:0.002826m2	Shielding Angle:

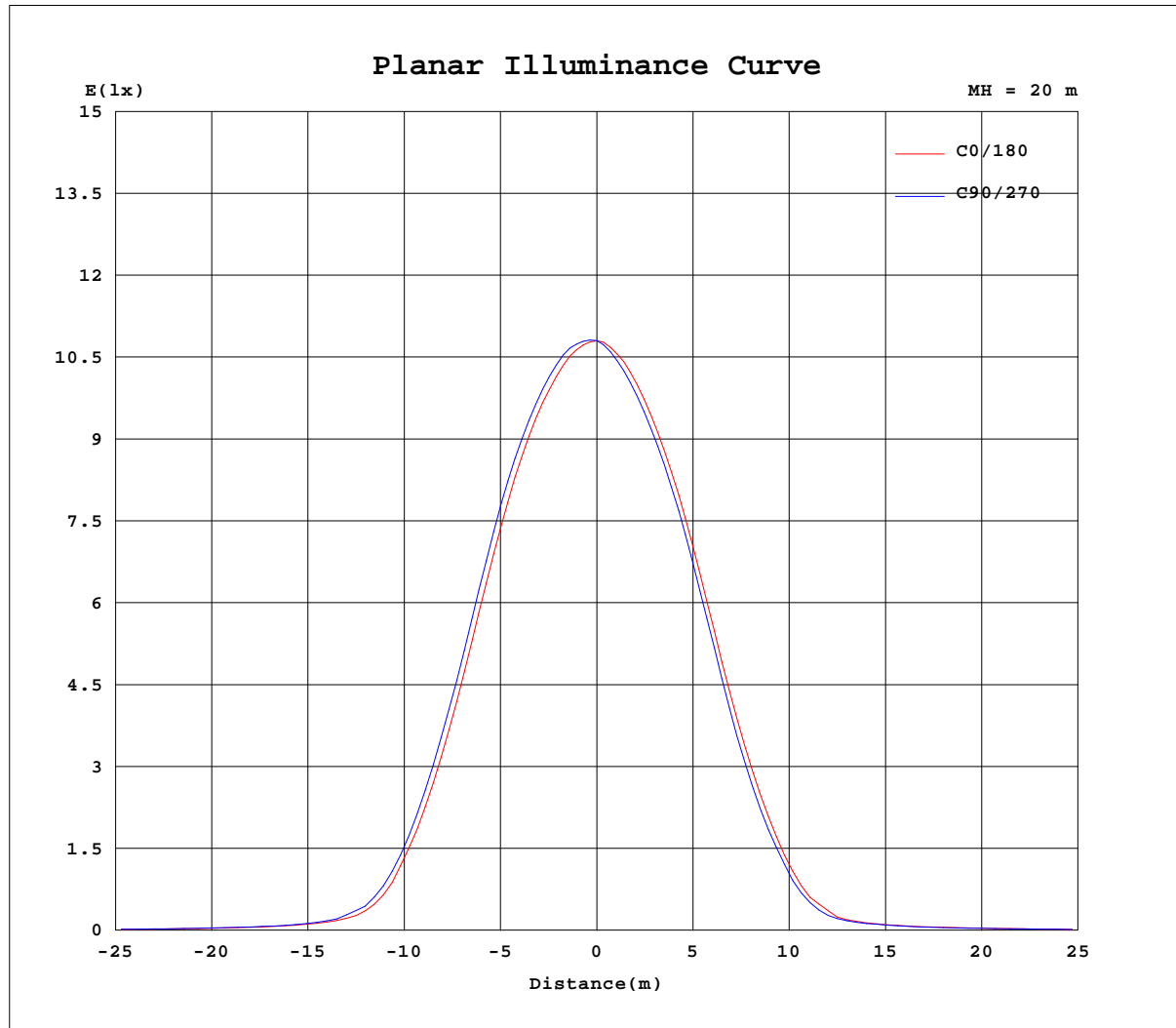
AvgL	cd/m2
L_0~180(65)av	6223
L_0~180(75)av	187
L_0~180(85)av	251
L_90~270(65)av	6095
L_90~270(75)av	178
L_90~270(85)av	199
L_45(65)av	6091
L_45(75)av	161
L_45(85)av	145

Standard: GB/T 29293-2012

C Range: 0 - 360DEG  
C Interval: 30.0DEG  
Test Speed: HIGH  
Temperature:25.3DEG  
Operators:Zoe  
Test Date:2022-12-12

γ Range: 0 - 180DEG  
γ Interval: 1.0DEG  
Test System:EVERFINE GO-SPEX500\_V1 SYSTEM V2.00.416  
Humidity:65.0%  
Test Distance:3.160m [K=1.0000]  
Remarks: LAMP:BXRE-30G1000-A-83 Ra:90  
LENS: TH-YL5023H-36D 36R  
DRIVER: RISE 120V 500mA  
30minutes warm-up

## Planar Illuminance Curve



C Range: 0 - 360DEG  
 C Interval: 30.0DEG  
 Test Speed: HIGH  
 Temperature: 25.3DEG  
 Operators: Zoe  
 Test Date: 2022-12-12

γ Range: 0 - 180DEG  
 γ Interval: 1.0DEG  
 Test System: EVERFINE GO-SPEX500\_V1 SYSTEM V2.00.416  
 Humidity: 65.0%  
 Test Distance: 3.160m [K=1.0000]  
 Remarks: LAMP: BXRE-30G1000-A-83 Ra: 90  
 LENS: TH-YL5023H-36D 36R  
 DRIVER: RISE 120V 500mA  
 30minutes warm-up



## LUMINOUS DISTRIBUTION INTENSITY DATA

Test:U:119.95V I:0.1742A P:20.719W PF:0.9900 Freq:59.98Hz Lamp Flux:2052.9x1 lm		
NAME: 2319.200-H3AM-500	TYPE:	WEIGHT:
SPEC.:3000K	DIM.:	SERIAL No.:2212121317
MFR.: RISE	SUR.:0.002826m2	Shielding Angle:

Table--1

UNIT: cd

C(DEG) γ (DEG)	0	30	60	90	120	150	180	210	240	270	300	330						
0	4323	4323	4323	4323	4323	4323	4323	4323	4323	4323	4323	4323						
5	4189	4243	4262	4266	4231	4173	4139	4093	4065	4061	4108	4170						
10	3789	3886	3925	3913	3850	3737	3675	3593	3552	3566	3652	3758						
15	3060	3195	3242	3241	3151	2974	2906	2794	2741	2764	2894	3042						
20	2023	2165	2199	2207	2099	1920	1879	1756	1706	1726	1867	2007						
25	998	1129	1138	1147	1048	929	926	850	802	820	899	1002						
30	299	369	363	377	327	274	297	240	255	230	293	307						
35	113	128	128	129	120	109	103	97.1	95.7	94.9	102	110						
40	68.0	73.8	73.3	75.4	72.3	68.0	64.9	61.4	60.4	60.9	63.1	66.5						
45	50.1	52.6	53.2	54.1	53.1	51.1	49.2	47.1	46.2	46.0	47.8	49.6						
50	37.5	39.0	39.3	40.5	39.5	38.1	37.3	35.6	35.0	35.4	36.3	37.5						
55	27.4	28.5	28.8	29.6	28.9	27.8	27.6	26.2	25.8	25.8	26.6	27.6						
60	14.8	15.3	15.3	15.7	15.3	14.6	14.9	14.0	13.8	13.8	14.5	15.2						
65	7.39	7.60	7.62	7.79	7.48	7.10	7.47	7.00	6.84	6.77	7.10	7.52						
70	2.73	2.89	2.95	3.18	2.80	2.49	2.75	2.39	2.29	2.37	2.49	2.74						
75	0.15	0.13	0.16	0.16	0.13	0.12	0.12	0.11	0.10	0.10	0.09	0.12						
80	0.07	0.06	0.07	0.06	0.05	0.05	0.07	0.05	0.04	0.05	0.04	0.04						
85	0.07	0.05	0.06	0.06	0.04	0.04	0.06	0.04	0.03	0.04	0.02	0.03						
90	0.00	0.00	0.00	0.00	0.00	0.00	0.00	0.00	0.00	0.00	0.00	0.00						
95	0.00	0.00	0.00	0.00	0.00	0.00	0.00	0.00	0.00	0.00	0.00	0.00						
100	0.00	0.00	0.00	0.00	0.00	0.00	0.00	0.00	0.00	0.00	0.00	0.00						
105	0.00	0.00	0.00	0.00	0.00	0.00	0.00	0.00	0.00	0.00	0.00	0.00						
110	0.00	0.00	0.00	0.00	0.00	0.00	0.00	0.00	0.00	0.00	0.00	0.00						
115	0.00	0.00	0.00	0.00	0.00	0.00	0.00	0.00	0.00	0.00	0.00	0.00						
120	0.00	0.00	0.00	0.00	0.00	0.00	0.00	0.00	0.00	0.00	0.00	0.00						
125	0.00	0.00	0.00	0.00	0.00	0.00	0.00	0.00	0.00	0.00	0.00	0.00						
130	0.00	0.00	0.00	0.00	0.00	0.00	0.00	0.00	0.00	0.00	0.00	0.00						
135	0.00	0.00	0.00	0.00	0.00	0.00	0.00	0.00	0.00	0.00	0.00	0.00						
140	0.00	0.00	0.00	0.00	0.00	0.00	0.00	0.00	0.00	0.00	0.00	0.00						
145	0.00	0.00	0.00	0.00	0.00	0.00	0.00	0.00	0.00	0.00	0.00	0.00						
150	0.00	0.00	0.00	0.00	0.00	0.00	0.00	0.00	0.00	0.00	0.00	0.00						
155	0.00	0.00	0.00	0.00	0.00	0.00	0.00	0.00	0.00	0.00	0.00	0.00						
160	0.00	0.00	0.00	0.00	0.00	0.00	0.00	0.00	0.00	0.00	0.00	0.00						
165	0.00	0.00	0.00	0.00	0.00	0.00	0.00	0.00	0.00	0.00	0.00	0.00						
170	0.00	0.00	0.00	0.00	0.00	0.00	0.00	0.00	0.00	0.00	0.00	0.00						
175	0.00	0.00	0.00	0.00	0.00	0.00	0.00	0.00	0.00	0.00	0.00	0.00						
180	0.00	0.00	0.00	0.00	0.00	0.00	0.00	0.00	0.00	0.00	0.00	0.00						

C Range: 0 - 360DEG  
C Interval: 30.0DEG  
Test Speed: HIGH  
Temperature:25.3DEG  
Operators:Zoe  
Test Date:2022-12-12

γ Range: 0 - 180DEG  
γ Interval: 1.0DEG  
Test System:EVERFINE GO-SPEX500\_V1 SYSTEM V2.00.416  
Humidity:65.0%  
Test Distance:3.160m [K=1.0000]  
Remarks: LAMP:BXRE-30G1000-A-83 Ra:90  
LENS: TH-YL5023H-36D 36R  
DRIVER: RISE 120V 500mA  
30minutes warm-up